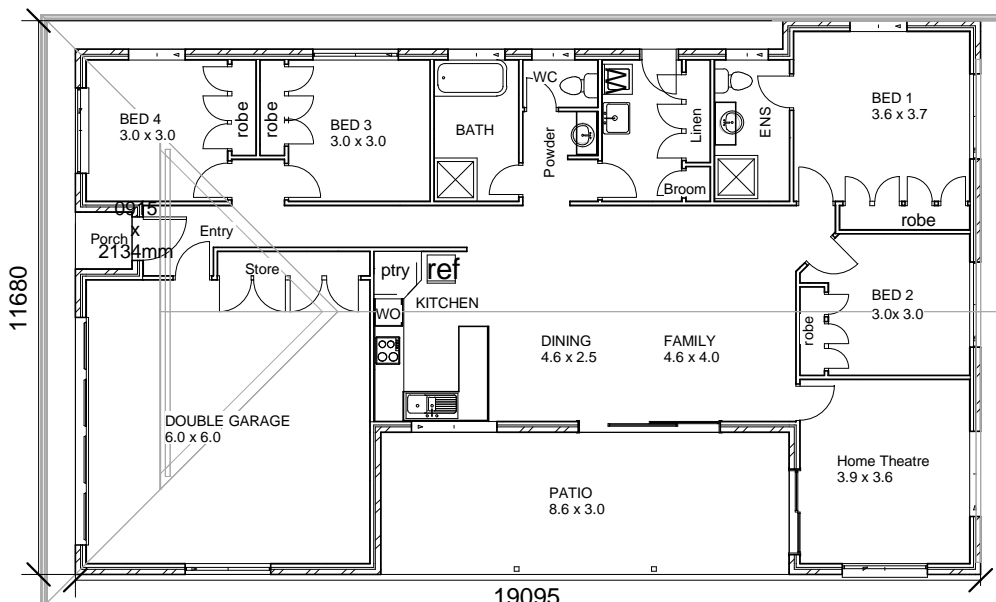


SOLOMON



4 Bedrooms: 3 Doubles and 1 King all with built in Robes
 Ensuite to Master Bedroom - Separate Home Theatre
 Main Bathroom with Separate Powder Room and WC
 Open Plan Kitchen Dining Family Rooms - Large Patio
 Double Garage - Linen, Broom and Storage Cupboards



Price \$ 233,650
 (as at March 2009)
 to be built on a flat
 block of land.

Floor Area

House	186.79
Porch	1.44
Patio	25.84
Grand total	214.08

© P H Build Pty. Ltd. Any form of replication of this drawing in full or in part without the permission of P H Build Pty. Ltd. constitutes an infringement of the copyright.



P.O. Box 5554
 GLADSTONE Q. 4680
 Ph. 07 4976 9299
 Fax. 07 4976 9288
 Mob. 0439 791 007